

22ND ANNIVERSARY SEASON

MIDAM
INTERNATIONAL

www.midamerica-music.com
midam@midamerica-music.com
212.239.0205

DUBLIN & KILKENNY, IRELAND 2027

Sunday, June 6 - Sunday, June 13, 2027

featuring

RIAM ORCHESTRA
& DISTINGUISHED SOLOISTS



CHRIST CHURCH CATHEDRAL, DUBLIN

SATURDAY, JUNE 12, 2027

The main gala concert featuring guest conductors and their 80+ voice choirs with members of the RIAM Orchestra and distinguished soloists.

ST. CANICE'S CATHEDRAL, KILKENNY

THURSDAY, JUNE 10, 2027

Optional spotlight concert opportunity for choirs to perform with limited accompaniment (piano available).



Peter Tiboris, Founder, General & Music Director Emeritus
Sir John Rutter CBE, Conductor Laureate

2027 Ireland Residency Land Package Inclusions

**8 days &
7 nights**
\$3,950

per person (based on
double occupancy)
*airfare not included

PERFORMANCE & ARTISTIC ADMINISTRATION

- **Two public performances:**

- The main gala concert is at Christ Church Cathedral, Dublin on June 12 featuring visiting guest conductors and their 80+ voice choirs alongside members of the RIAM Orchestra.
- The optional spotlight concert is at St. Canice's Cathedral, Kilkenny on June 10. This concert will feature participating choirs led by their own conductors. Accompaniment is limited to piano for the spotlight concert.

- Professional concert photographs and a complimentary YouTube video of main gala concert sent to each director.
- National and international press coverage.
- Publicity, management, and audience development of your concerts.
- Complimentary concert poster given to each participant.

**A minimum of three groups must agree to do the spotlight performance before it can go forward.*

THREE CULTURAL TOURS



Historic Gems of Dublin
Tour



Wicklow (The Garden of
Ireland) Tour



Kilkenny Castle Tour

- Entrance fee, bus transportation (if necessary), a professional guide, personal broadcast microphones, and hearing devices are all included.
- Three tours:

First Tour: Historic Gems of Dublin

Second Tour: Bus Tour of Dublin and Wicklow (The Garden of Ireland)

Third Tour: Kilkenny Castle and City Walking Tour

*Descriptions of each tour on page 7.

2027 Ireland Residency Land Package Inclusions (continued)

8 days & 7 nights

\$3,950

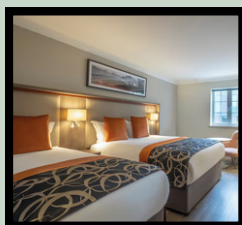
per person (based on double occupancy)

*airfare not included

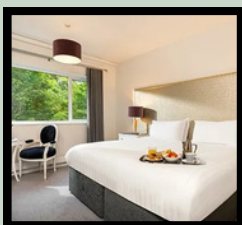
LODGING & BOARD:

- Five nights at *The Clayton Hotel, Ballsbridge and two nights at *Hotel Kilkenny at double occupancy. Click the underlined caption to learn more about the hotel.

Occupancy options:



[The Clayton Hotel](#)



[Hotel Kilkenny](#)

*Triple	Two beds & three people	\$3,950 (no additional cost) per person
Twin	Two beds & two people	\$3,950 (no additional cost) per person
Double	One bed & two people	\$3,950 per person
Single	One bed & one person	\$4,950 (\$1,000 additional) per person

**Triple occupancy rooms are in limited supply.*

**If accommodation other than double occupancy is required due to the rooming configuration of your group (i.e. if your total number of occupancy participants is not divisible by two), additional room costs are to be borne by your organization or participants.*

- All local taxes, gratuities (including tips for guides and bus drivers), and Value Added Tax (VAT).
- MidAm International personnel are on site in the hotel during your residency.
- Seven breakfasts, one welcome dinner, and one gala dinner.
- A decision regarding your hotel assignments will be made by March 1, 2027.

**Or a hotel of similar quality.*

GROUND TRANSPORTATION:

- Bus transfers for all tours, rehearsals, and concerts as needed. Airport transfers will be available on May 30 for arrivals and on June 6 for departures, connecting round trip from the Dublin Airport (DUB).
- An escort will accompany every bus journey.
- Assistance with purchasing round-trip international flight tickets is available upon request.

EXCLUSIONS:

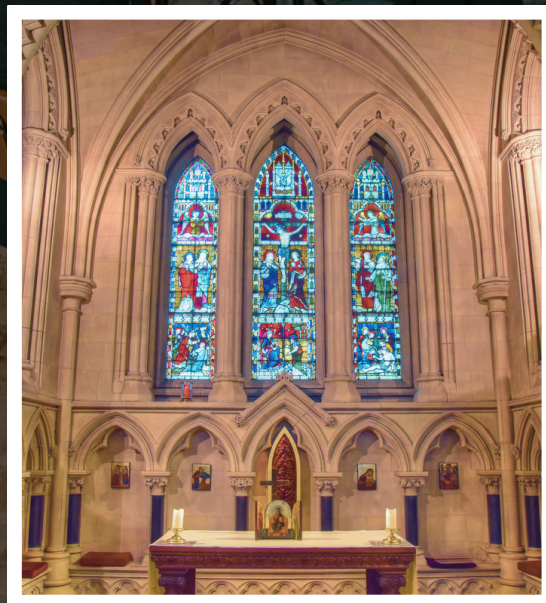
- Round-trip airfare to Ireland (see more on airfare on page 12).
- All lunches and dinners (except the gala dinner).
- Purchase of choral music.
- MidAm arranged optional tours, if applicable.

TWO PERFORMANCE OPPORTUNITIES



Optional spotlight concert on June 10, 2027 led by their own conductors at St. Canice's Cathedral in Kilkenny. Accompaniment is limited to piano for the spotlight concerts.

Main gala concert on June 12, 2027 includes guest conductors leading their 80+ voice choirs at Christ Church Cathedral in Dublin alongside the RIAM Orchestra.



*If any musical program does not achieve the pre-arranged target number in registrations, MidAm International reserves the right to substitute a spotlight piano-accompanied concert at a residency location, allowing for 25 minutes of stage time, which is 20 minutes of music time.



2027 CHORAL SERIES:

IRELAND SAMPLE ITINERARY

Arrive at the Dublin Airport (DUB) by 3:30 pm. Our staff will meet you at the airport for bus transfer to Dublin hotel. Rest of day is free.

Evening: Welcome dinner at the hotel. Meeting with our Ireland team.

DAY 1

Morning: Chorus rehearsal for main gala concert at residency hotel or a nearby location.

Afternoon: Cultural tour one.

Evening: Chorus rehearsal for optional spotlight concert at hotel or a nearby location otherwise free to explore.

DAY 2

Morning: Rehearsal for main gala concert at residency hotel or a nearby location.

Afternoon: Cultural tour two.

Evening: Chorus rehearsal for optional spotlight concert at hotel or a nearby location otherwise free to explore.

DAY 3

Morning: Check out of Dublin hotel and depart to Kilkenny.

Afternoon: Cultural tour three.

Evening: Check into Kilkenny hotel. Chorus rehearsal for optional spotlight concert at hotel or a nearby location.

DAY 4

Morning: Free to explore.

Afternoon: Dress rehearsal at St. Canice's Cathedral for optional spotlight concert.

Evening: Pre-performance dinner. Spotlight concert at St. Canice's Cathedral.

DAY 5

2027 CHORAL SERIES:

IRELAND SAMPLE ITINERARY

(CONTINUED)

DAY 6

Morning: Check out of Kilkenny hotel and depart to Dublin.

Afternoon: Check into Dublin hotel. Chorus rehearsal for main gala concert at residency hotel or a nearby location.

Evening: Gala dinner.

Morning: Dress rehearsal at Thomas Prior Hall for main gala concert.

Afternoon: Free to explore.

Evening: Sound check and main gala concert at Christ Church Cathedral.

DAY 7

DAY 8

Check-out and depart by coach to airport to return home.



Ireland Cultural Tours



Tour 1: Historic Gems of Dublin

Take a guided walking tour with a resident student through the historic grounds of Trinity College. Walk in the footsteps of famous past students and discover the stories that make Trinity such a special place. Followed by entry to the Book of Kells and Old Library. You will also get to see Saint Patrick's Cathedral, Ireland's National Cathedral. Followed by a guided tour by bus of beautiful Dublin city centre that is a panoramic tour of the capital including historic buildings of the GPO, O'Connell Street, Georgian Dublin, St Patrick's Cathedral, Christ Church Dublin Castle, and City Hall ending in the Phoenix Park.

Tour 2: Wicklow (The Garden of Ireland)

Walk the valley of Glendalough surrounded by nature and visit the 6th century monastic site of Glendalough founded by St Kevin. Later step back in time with a tour of 18th century birthplace and home of Charles Stewart Parnell, before experiencing beyond the trees a canopy walk and Ireland's only giant slide.



Tour 3: Kilkenny Castle and City Walking Tour

You will visit Kilkenny Castle. Few buildings in Ireland can boast a longer history of continuous occupation than Kilkenny Castle. Afterwards, you will embark on a guided tour, an amusing way to journey across historic Kilkenny City. Experience a blend of comedy, magic and history and enjoy a jolly jaunt tracing the fascinating medieval mile on this tour.

Initial Payment Deadlines & Complimentary Packages for 2027 International Residencies

2027 Concerts

Early Registration Deadline:

June 1, 2026

Standard Registration Deadline:

November 15, 2026

****All payments must be received in office by the due date.***

Package Credits:

Total number of paid registered participants:	Deposit received by early registration deadline:	Deposit received by standard registration deadline:
30	2 Package Credits	1 Package Credit
60	4 Package Credits	2 Package Credits
90	6 Package Credits	3 Package Credits

***All credits will be applied on the group's final invoice.**

***Bonus packages will be awarded at double occupancy.**

Terms and Conditions:

MidAm International only registers groups of 10 participants or more (any combination of performers and non-performers- family, friends, colleagues). Group directors must indicate at the time of registration whether they will be participating as a performer, non-performer, or guest conductor. Directors who are also guest conductors are not included in a group's tally as their accommodations are handled separately. Credits only apply to group registrations.

Complimentary packages may be used for an individual (director, accompanist, etc.), or the value may be applied toward the group's balance to reduce each participant's cost. All credits will be applied to the group's final invoice.

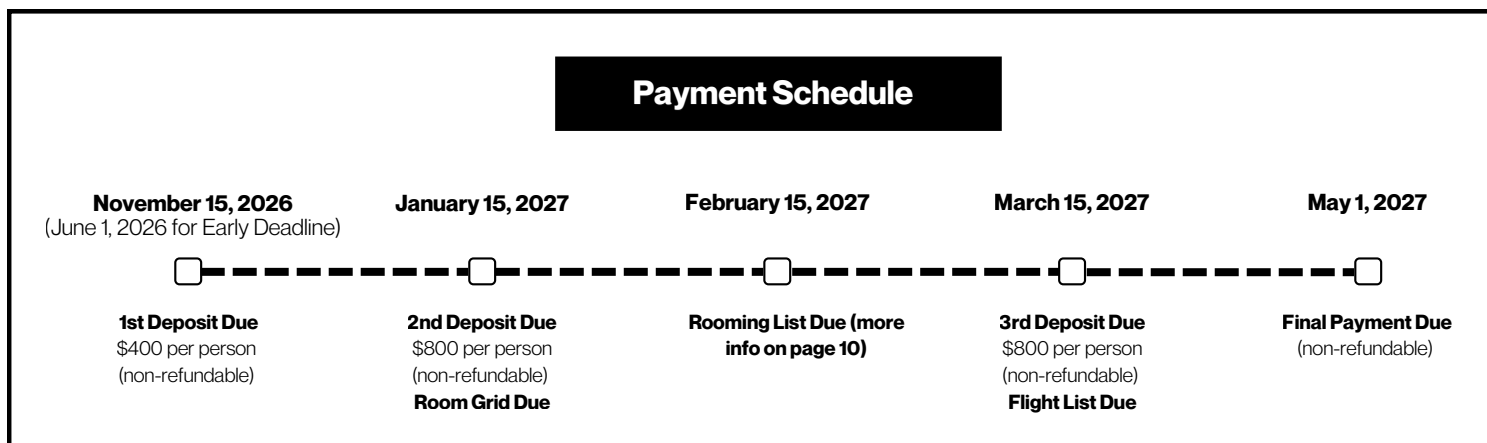
Please read the full terms and conditions on page 12.

2027 International Residency

Deposit and Document Schedules:



***All payments must be received in office by the due date.**



Deposit/document schedules are firm and all payments and all required MidAm International documents must be received by MidAm by the deposit/document deadline (NOT postmarked). MidAm retains the right to cancel groups for non-payment, without refund, if the deposit schedule is not met. Therefore, if any delay in payment or required MidAm document is anticipated, the group director must contact MidAm prior to the payment deadline. Additionally, if a group's deposit is not received by the deposit deadline (and MidAm does not cancel their registration immediately), an additional \$25 per person late fee will be added to their past due deposit. An additional \$25 per person late fee will be added for each additional week that passes following the original deposit deadline if the deposit remains unpaid.

As noted on pages 2 and 3, the total cost is \$3950 per person for a double occupancy room. This includes events, accommodations, transfers, and all local taxes, gratuities (excluding tips for guides and bus drivers), and Value Added Taxes (VAT) described in the day-to-day itinerary and specifically itemized on the "inclusions" page. This price does not include airfare. Single supplement occupancy is \$4950 (\$1000 additional per person).

Please note that single rooms are limited. Triple rooms are only **occasionally available** and the cost per person is \$3950, the same as a double room occupancy. Note that all rooms are "double" size and if a third bed is put in, it may be a cot or convertible/pull-out sofa; furthermore, the room is not larger than a standard double room. Spouses, friends, and families are welcome to be part of the residency. The same package described here applies to them as well.

Your online concert registration form must be completed prior to sending your first deposit. Make checks payable in US Dollars to MidAm International, Inc. and send via Federal Express/Express Mail (regular mail is not recommended) to:

MidAm International, Inc.
Joyce Howard-Brazel
265 Sunrise Highway, Suite 1-183
Rockville Centre, NY 11570

Your ensemble must be paid in full prior to your arrival to the destination country. Please send **one combined check** per registration. **Do not** send individual checks. Should a check payment be returned by bank as unpaid, a \$35 returned check fee will be added to your final invoice.

*For information on wire transfers, ACH payments and/or credit card payments, please contact Joyce Howard-Brazel, Chief of Client Services at jhoward@midamerica-music.com.

Once received, all payments made to MidAm International are non-refundable. This applies to any individual or group who has made any payments. In addition, should an individual cancel participation, all deposits/payments are forfeited and non-transferrable to the remaining group balance. Forfeited deposits may only be used for substitutions on a one-to-one basis.

***If your residency should be cancelled by MidAm International** (with exception of cancellations made due to late or non-payment), all monies are completely and immediately refundable.

*All prices listed are in U.S. Dollars (USD).

*Subject to revision

2027 International Residency Document Information

Room Grid and Room List:

Room Grid: Indicates how many rooms are required for your group divisible by triple, double, or single occupancy.

Room List: Includes participant's full legal name, date of birth, passport number, passport expiration date, nationality, passport origin country, director/group name, and cell phone number all organized by room. *Usually sent by the group director

Flight List:

Indicates participant's full legal names exactly as they appear on passports and the choir director's name. You need to provide the **arrival** airline, date, time, and flight number. You will also need to provide the **departure** airline, date, time, and flight number.

***A valid passport is required, and it must remain valid for at least six months beyond the final day of the residency. All travelers (U.S. citizen or non-U.S. citizen) should inquire with the appropriate embassy or consulate regarding entry requirements.**

Final Invoice:

The invoice for the balance due will be based on the rooming list, costs for extra nights, and optional tours, if applicable.

*Use the documents that you will receive from MidAm International.

*Be sure to complete all documents online by the requested due dates outlined on page 9.

Frequently Asked Questions (FAQ)

1

How are ensembles selected for and invited to participate in this concert series?

Each ensemble has been specifically recommended or referred to us by music directors in the profession, or by one of the more than 850 guest conductors who have appeared on our series since 1984.

2

For choral concerts, is it required that music be prepared prior to arrival?

Yes. Choruses or chorus members who are not thoroughly prepared will not be allowed to rehearse or perform in the concert.

3

When will we know the schedule for our residency?

Schedules (and rehearsal locations) are published 45 days in advance of your arrival. Please refer to the general residency schedule contained in this document for approximate rehearsal and tour times.

4

When can we purchase air tickets and other reservations?

It is essential and critical that all groups wait until they receive written confirmation and a “go-ahead” from Joyce Howard-Brazel, Chief of Client Services, before making any flight arrangements. This will occur after registrations have been received and the concert is confirmed.

5

How can we request ADA accommodations?

You can request accommodations by contacting midam@midamerica-music.com.

6

What size audience can we expect at our concert?

Audiences are large and enthusiastic. MidAm International has a comprehensive public relations and audience development division that typically sees the vast majority of our international concerts sold out by concert time.

7

How are the concerts promoted and advertised?

Concerts are promoted extensively through local press and social media, along with hundreds of public and private business sources in each location. This coverage, as well as efforts for press coverage in ensembles’ home locations are led by Andrea Niederman, our Director of Public Relations, Publications, and Audience Development and her team.

8

Are there any scholarship opportunities available for groups or individuals that need financial assistance?

Applications are now being accepted for the Peter Tiboris Legacy Scholarship until 9/1/2026. You can apply [here](#).

2027 International Residency Terms & Conditions (page 1/1):

Deposits, Package Credits, and Refunds

If your residency should be cancelled by MidAm International (with exception of cancellations made due to late or non-payment), all monies are completely and immediately refundable. This applies to any individual or group who has made any payments. Group directors must indicate at the time of registration whether they will be participating as a performer, non-performer, or guest conductor. Directors that are guest conductors are not included in a group's tally, as their accommodations are handled separately. Credits only apply to group registrations. Complimentary packages may be used for an individual (director, accompanist, etc.) or may be applied toward the group's balance to reduce each participant's cost. All credits will be applied on the group's final invoice. Deposit/Document schedules are firm and all payments and all required MidAm documents must be received by MidAm International by the deposit/document deadline (NOT postmarked). MidAm International retains the right to cancel groups for non-payment, without refund, if the deposit schedule is not met. Therefore, if any delay in payment or required MidAm document is anticipated, the group director must contact MidAm prior to the payment deadline. Additionally, if a group's deposit is not received by the deposit deadline (and MidAm International does not cancel their registration immediately), an additional \$25 per person late fee will be added to their past-due deposit. An additional \$25 per person late fee will be added for each additional week that passes following the original deposit deadline if the deposit remains unpaid. Should a check payment be returned by bank as unpaid, a \$35 returned check fee will be added to your final invoice. All prices listed are in U.S. Dollars (USD).

Substitutions and Travel Insurance

Your ensemble must be paid in full prior to your arrival to the destination country. Once received, all payments made to MidAm International are non-refundable. This applies to any individual or group who has made any payments. In addition, should an individual cancel participation, all deposits/payments are forfeited and non-transferrable to the remaining group balance. Forfeited deposits may only be used for substitutions on a one-to-one basis. Therefore, cancellation insurance is strongly recommended. MidAm International does not endorse or recommend any travel insurance company who might provide such insurance to the ensemble. Please investigate thoroughly through your preferred insurance carrier prior to your initial deposit.

Airfare

Airfare to and from your international residency destination are the responsibility of the participating ensembles and individuals. If your air arrival is at an alternate airport, you need to arrange transport to the residency city at your own cost. Please consult with your personal travel agent and do your own research on the internet for the best possible price. Also, MidAm International has a travel relationship with Chai Travel Advisors. It is recommended that any groups (10 or more) looking to purchase tickets collectively contact Nanette, their representative, at MAP@chaitravel.com or 973-200-4786, and have her investigate an airfare on your behalf. You are under no obligation to take the airfare she proposes. Please **do not** purchase anything without getting a "go ahead" from MidAm International. **A valid passport is required, and it must remain valid for at least six months beyond the final day of the residency. All travelers (U.S. citizen or non-U.S. citizen) should inquire with the appropriate embassy or consulate regarding entry requirements.**

Participant Responsibility

MidAm International shall not be liable to any individual registrant or group for any injuries, losses, or expenses suffered or incurred by any individual registrant or group arising out of or relating to your purchase of this package. All registrants and groups shall maintain appropriate and adequate general liability insurance coverage and any workmen's compensation insurance required by applicable state law. Group Directors/Leaders shall be responsible for the well-being and safety of the registrants in their ensembles. If not already covered by medical insurance, registrants and their Group Directors are strongly advised to obtain adequate travel medical insurance for all registrants in the ensemble covering the duration of their travel. It is the responsibility of all persons participating as performers to arrive on time and be fully prepared for all rehearsals as well as the performance. All participants in the package must undertake at their own expense to comply with all dress and health requirements of governmental entities as well as the venues where the performance and other events are being held. Should these parameters not be met, MidAm retains the right to disallow those individuals from participating in the rehearsal and/or performance. All performers and non-performers as well as their concert guests give MidAm International permission to take their photo and video within the confines of this package, and to use their performance for marketing purposes indefinitely.

Force Majeure

If the specified venue is unavailable for your performance due to "acts of God" (force majeure), MidAm International reserves the right to move this performance to another concert location within the residency city, or if such move is not practicable for reasons beyond the control of MidAm International then MidAm International shall be relieved from such obligation. Acts of God (force majeure) shall include any unexpected act or circumstance that prevents or impedes MidAm from performing one or more of its contractual obligations if such impediment to MidAm's performance is beyond MidAm's reasonable control and the effects of such impediment cannot reasonably have been avoided or overcome by MidAm. For purposes of this provision, Acts of God shall include, but are not limited to: a) war (whether declared or not), hostilities, act of foreign enemies, b) civil war, riot, rebellion and revolution, act of terrorism, sabotage or piracy; c) currency and trade restriction, embargo, sanction; d) act of authority whether lawful or unlawful, compliance with any law or governmental order, expropriation, seizure of works, requisition, nationalization; e) plague, epidemic (including a recurrence of COVID-19 pandemic), natural disaster or extreme natural event; f) explosion, fire, destruction of equipment, prolonged break-down of transport, telecommunication, information system or energy; g) and general labor disturbance. In the event that "force majeure" causes the cancellation of this tour prior to departure or at any time after arrival in residency destination monies sent to MidAm International are nonrefundable.