

22ND ANNIVERSARY SEASON

MIDAM
INTERNATIONAL

www.midamerica-music.com
midam@midamerica-music.com
212.239.0205

BARCELONA, SPAIN 2027

Sunday, May 30 - Sunday, June 6, 2027

featuring

ORQUESTRA SIMFÒNICA DEL VALLÈS
& DISTINGUISHED SOLOISTS



PALAU DE LA MÚSICA CATALANA

FRIDAY, JUNE 4, 2027

Main gala concert featuring Sir John Rutter, CBE conducting all participating choirs with members of Orquestra Simfònica del Vallès and distinguished soloists.

BASÍLICA DE SANTA MARIA DEL PI

WEDNESDAY, JUNE 2, 2027

Chamber orchestra concert opportunity for 80+ voice choirs to perform with their own guest conductors and members of Orquestra Simfònica del Vallès.



Peter Tiboris, Founder, General & Music Director Emeritus
Sir John Rutter CBE, Conductor Laureate

2027 Spain Residency Land Package Inclusions

**8 days &
7 nights**

\$3,950

per person (based on
double occupancy)

*airfare not included

PERFORMANCE & ARTISTIC ADMINISTRATION

- **Two public performances:**

- The main gala concert is at Palau de la Música Catalana on June 4 featuring Sir John Rutter, CBE conducting all participating choirs with members of the Orquestra Simfònica del Vallès. Repertoire options are listed on page 4.
- The chamber orchestra concert is at Basilica de Santa Maria del Pi on June 2. This concert will feature 80+ voice choirs led by their own conductors and members of the Orquestra Simfònica del Vallès.
- Professional concert photographs and a complimentary YouTube video of main gala concert and chamber orchestra concert sent to each director.
- National and international press coverage.
- Publicity, management, and audience development of your concerts.
- Complimentary concert poster given to each participant.

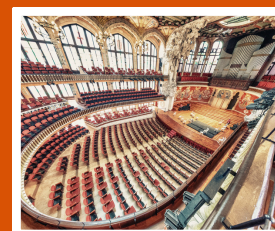
THREE CULTURAL TOURS



Barcelona City Tour



Modernism and Gaudi in
Barcelona



Sounds in Barcelona/ Born
Neighborhood

- Entrance fee, bus transportation (if necessary), a professional guide, personal broadcast microphones, and hearing devices are all included.
- Three tours (fourth tour is optional):

First Tour: Barcelona City Tour

Second Tour: Modernism and Gaudi in Barcelona

Third Tour: Sounds in Barcelona/ Born Neighborhood

Optional Fourth Tour: *Montserrat Tour (at an additional cost)*

*Descriptions of each tour on page 7.

*All prices listed are in U.S. Dollars (USD).

*Subject to revision

2027 Spain Residency Land Package Inclusions (continued)

**8 days &
7 nights**

\$3,950

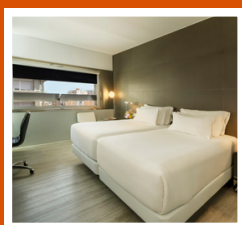
per person (based on
double occupancy)

*airfare not included

LODGING & BOARD:

- Seven nights at *NH Hotel Constanza at double occupancy. Click the underlined caption to learn more about the hotel.

Occupancy options:



NH Hotel Constanza

| | | |
|---------|-------------------------|---|
| *Triple | Two beds & three people | \$3,950 (no additional cost) per person |
| Twin | Two beds & two people | \$3,950 (no additional cost) per person |
| Double | One bed & two people | \$3,950 per person |
| Single | One bed & one person | \$4,950 (\$1,000 additional) per person |

**Triple occupancy rooms are in limited supply.*

**If accommodation other than double occupancy is required due to the rooming configuration of your group (i.e. if your total number of occupancy participants is not divisible by two), additional room costs are to be borne by your organization or participants.*

- All local taxes, gratuities (including tips for guides and bus drivers), and Value Added Tax (VAT).
- MidAm International personnel are on site in the hotel during your residency.
- Seven breakfasts and one gala dinner.
- A decision regarding your hotel assignments will be made by March 1, 2027.

**Or a hotel of similar quality.*

GROUND TRANSPORTATION:

- Bus transfers for all tours, rehearsals, and concerts as needed. Airport transfers will be available on May 30 for arrivals and on June 6 for departures, connecting round trip from the Josep Tarradellas Barcelona-El Prat Airport (BCN).
- An escort will accompany every bus journey.
- Assistance with purchasing round-trip international flight tickets is available upon request.

EXCLUSIONS:

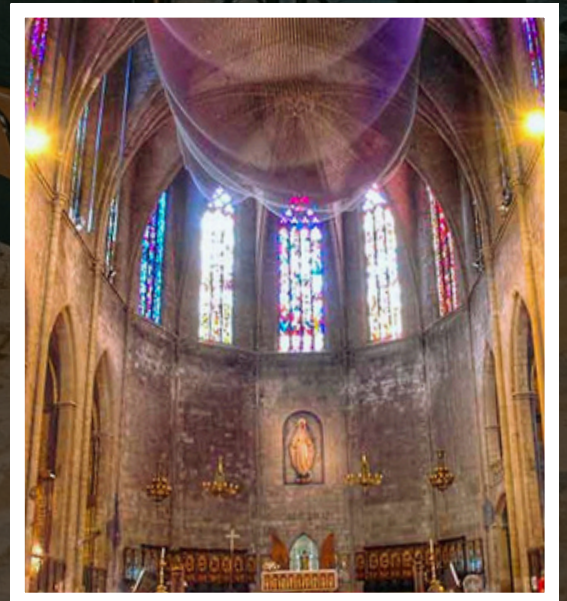
- Round-trip airfare to Spain (see more on airfare on page 12).
- All lunches and dinners (except the gala dinner).
- Purchase of choral music.
- MidAm arranged optional tours, if applicable.

TWO PERFORMANCE OPPORTUNITIES



Main gala concert on June 4, 2027 at Palau de la Música Catalana featuring Sir John Rutter, CBE conducting all participating choirs with members of the Orquestra Simfònica del Vallès. Repertoire options include Sir John Rutter's new work "I'll Make Me a World" or his "Mass of the Children."

Chamber orchestra concert on June 2, 2027 at Basílica de Santa Maria del Pi featuring 80+ voice choirs led by their own conductors accompanied by members of the Orquestra Simfònica del Vallès.



*If any musical program does not achieve the pre-arranged target number in registrations, MidAm International reserves the right to substitute a spotlight piano-accompanied concert at a residency location, allowing for 25 minutes of stage time, which is 20 minutes of music time.



2027 CHORAL SERIES: SPAIN SAMPLE ITINERARY

Arrive at the Josep Tarradellas Barcelona-El Prat Airport (BCN) by 3:30 pm. Our staff will meet you at the airport for bus transfer to hotel. Rest of day is free.

Evening: Meeting with our Barcelona team.

DAY 1

Morning: Chorus rehearsal for main gala concert at residency hotel.

Afternoon: Cultural tour one.

Evening: Chorus rehearsal for chamber orchestra concert at hotel.

DAY 2

Morning: Chorus rehearsal for main gala concert at residency hotel.

Afternoon: Cultural tour two.

Evening: Chorus rehearsal for chamber orchestra concert at hotel.

DAY 3

Morning: Free to explore or optional rehearsal.

Afternoon: Depart for Basílica de Santa Maria del Pi for chamber orchestra concert dress rehearsal.

Evening: Chamber orchestra concert at Basílica de Santa Maria del Pi.

DAY 4

Morning: Chorus rehearsal for main gala concert at residency hotel.

Afternoon: Cultural tour three.

Evening: Optional chorus rehearsal for main gala concert after dinner.

DAY 5

2027 CHORAL SERIES:

SPAIN SAMPLE ITINERARY

(CONTINUED)

DAY 6

Morning: Free to explore.

Afternoon: Depart for Palau de la Música Catalana for main gala concert dress rehearsal.

Evening: Main gala concert at Palau de la Música Catalana with Sir John Rutter, CBE.

Morning: Free to explore.

Afternoon: Optional cultural tour four.

Evening: Gala dinner.

DAY 7

DAY 8

Check-out and depart by coach to airport to return home.



Spain Cultural Tours

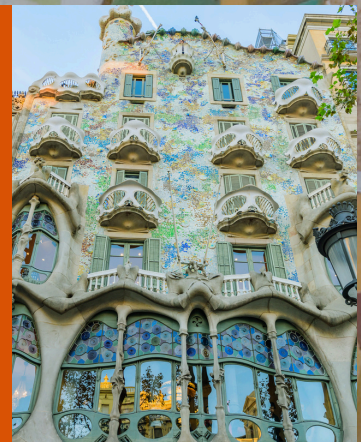


Tour 1: Barcelona City Tour

Let yourself be whisked away into the narrow streets of Barcelona's Old Town and discover the beautiful corners and squares of this part of the city. Visit the iconic La Boqueria Market, Barrio Gótico and Las Ramblas. Stop at authentic Catalan bars/stores and savor traditional Spanish delicacies. Discover Barcelona from above with a visit to Montjuic. Montjuic offers breathtaking panoramic views of Barcelona and a captivating blend of culture, history, and nature. This scenic hill provides a fascinating perspective of the city.

Tour 2: Modernism and Gaudi in Barcelona

A guided Modernism tour in Barcelona takes you on a fascinating journey through the city's most iconic architectural treasures from the late 19th and early 20th centuries. You'll discover masterpieces by Antoni Gaudí, such as Casa Batlló and La Pedrera, along with works by other influential figures like Domènech i Montaner and Puig i Cadafalch. The tour immerses you in the artistic, social, and cultural context of Catalan Modernism, showcasing the movement's distinctive use of color, organic forms, and decorative details that still define Barcelona's unique character today.



Tour 3: Sounds in Barcelona/ Born Neighborhood

This tour invites you to discover the vibrant heart of Barcelona through its sounds, stories, and stunning landmarks. Strolling through the charming Born neighborhood, you'll see the impressive Arc de Triomf. The experience culminates with a visit to the breathtaking Palau de la Música Catalana. Your visit begins in the Orfeó Català rehearsal room, where you can warm up your voices for about 10 minutes. You'll then explore the concert hall's most iconic spaces, including the elegant Lluís Millet Room and its balcony. Finally, you step onto the stage of the magnificent Concert Hall to perform the song you have prepared—a truly unforgettable blend of architecture, music, and artistic expression.

Optional Tour 4: Montserrat Tour (at an additional cost)

A visit to Montserrat offers a perfect blend of natural beauty, spirituality, and culture just outside Barcelona. Nestled among dramatic mountain peaks, the Benedictine monastery is home to the revered Black Madonna and a centuries-old boys' choir. You can explore the basilica, hike scenic trails with breathtaking views, or ride the funicular deeper into the rugged landscape.



Initial Payment Deadlines & Complimentary Packages for 2027 International Residencies

2027 Concerts

Early Registration Deadline:

June 1, 2026

Standard Registration Deadline:

November 15, 2026

****All payments must be received in office by the due date.***

Package Credits:

| Total number of paid registered participants: | Deposit received by early registration deadline: | Deposit received by standard registration deadline: |
|---|---|--|
| 30 | 2 Package Credits | 1 Package Credit |
| 60 | 4 Package Credits | 2 Package Credits |
| 90 | 6 Package Credits | 3 Package Credits |

***All credits will be applied on the group's final invoice.**

***Bonus packages will be awarded at double occupancy.**

Terms and Conditions:

MidAm International only registers groups of 10 participants or more (any combination of performers and non-performers- family, friends, colleagues). Group directors must indicate at the time of registration whether they will be participating as a performer, non-performer, or guest conductor. Directors who are also guest conductors are not included in a group's tally as their accommodations are handled separately. Credits only apply to group registrations.

Complimentary packages may be used for an individual (director, accompanist, etc.), or the value may be applied toward the group's balance to reduce each participant's cost. All credits will be applied to the group's final invoice.

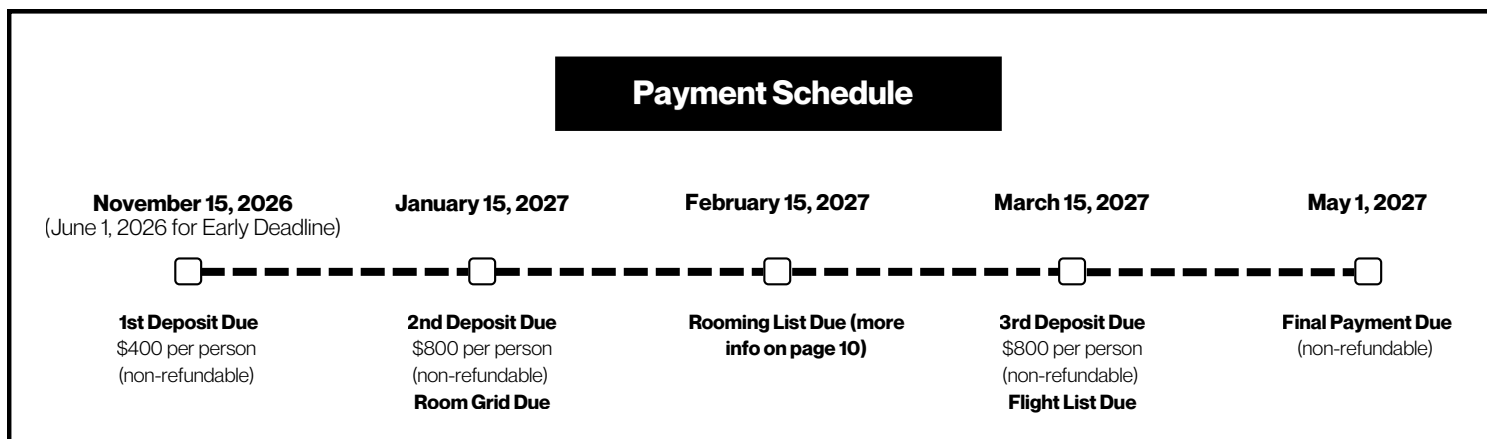
Please read the full terms and conditions on page 12.

2027 International Residency

Deposit and Document Schedules:



***All payments must be received in office by the due date.**



Deposit/document schedules are firm and all payments and all required MidAm International documents must be received by MidAm by the deposit/document deadline (NOT postmarked). MidAm retains the right to cancel groups for non-payment, without refund, if the deposit schedule is not met. Therefore, if any delay in payment or required MidAm document is anticipated, the group director must contact MidAm prior to the payment deadline. Additionally, if a group's deposit is not received by the deposit deadline (and MidAm does not cancel their registration immediately), an additional \$25 per person late fee will be added to their past due deposit. An additional \$25 per person late fee will be added for each additional week that passes following the original deposit deadline if the deposit remains unpaid.

As noted on pages 2 and 3, the total cost is \$3950 per person for a double occupancy room. This includes events, accommodations, transfers, and all local taxes, gratuities (excluding tips for guides and bus drivers), and Value Added Taxes (VAT) described in the day-to-day itinerary and specifically itemized on the "inclusions" page. This price does not include airfare. Single supplement occupancy is \$4950 (\$1000 additional per person).

Please note that single rooms are limited. Triple rooms are only **occasionally available** and the cost per person is \$3950, the same as a double room occupancy. Note that all rooms are "double" size and if a third bed is put in, it may be a cot or convertible/pull-out sofa; furthermore, the room is not larger than a standard double room. Spouses, friends, and families are welcome to be part of the residency. The same package described here applies to them as well.

Your online concert registration form must be completed prior to sending your first deposit. Make checks payable in US Dollars to MidAm International, Inc. and send via Federal Express/Express Mail (regular mail is not recommended) to:

MidAm International, Inc.
Joyce Howard-Brazel
265 Sunrise Highway, Suite 1-183
Rockville Centre, NY 11570

Your ensemble must be paid in full prior to your arrival to the destination country. Please send **one combined check** per registration. **Do not** send individual checks. Should a check payment be returned by bank as unpaid, a \$35 returned check fee will be added to your final invoice.

*For information on wire transfers, ACH payments and/or credit card payments, please contact Joyce Howard-Brazel, Chief of Client Services at jhoward@midamerica-music.com.

Once received, all payments made to MidAm International are non-refundable. This applies to any individual or group who has made any payments. In addition, should an individual cancel participation, all deposits/payments are forfeited and non-transferrable to the remaining group balance. Forfeited deposits may only be used for substitutions on a one-to-one basis.

***If your residency should be cancelled by MidAm International** (with exception of cancellations made due to late or non-payment), all monies are completely and immediately refundable.

*All prices listed are in U.S. Dollars (USD).

*Subject to revision

2027 International Residency Document Information

Room Grid and Room List:

Room Grid: Indicates how many rooms are required for your group divisible by triple, double, or single occupancy.

Room List: Includes participant's full legal name, date of birth, passport number, passport expiration date, nationality, passport origin country, director/group name, and cell phone number all organized by room. *Usually sent by the group director

Flight List:

Indicates participant's full legal names exactly as they appear on passports and the choir director's name. You need to provide the **arrival** airline, date, time, and flight number. You will also need to provide the **departure** airline, date, time, and flight number.

***A valid passport is required, and it must remain valid for at least six months beyond the final day of the residency. All travelers (U.S. citizen or non-U.S. citizen) should inquire with the appropriate embassy or consulate regarding entry requirements.**

Final Invoice:

The invoice for the balance due will be based on the rooming list, costs for extra nights, and optional tours, if applicable.

*Use the documents that you will receive from MidAm International.

*Be sure to complete all documents online by the requested due dates outlined on page 9.

Frequently Asked Questions (FAQ)

1

How are ensembles selected for and invited to participate in this concert series?

Each ensemble has been specifically recommended or referred to us by music directors in the profession, or by one of the more than 850 guest conductors who have appeared on our series since 1984.

2

For choral concerts, is it required that music be prepared prior to arrival?

Yes. Choruses or chorus members who are not thoroughly prepared will not be allowed to rehearse or perform in the concert.

3

When will we know the schedule for our residency?

Schedules (and rehearsal locations) are published 45 days in advance of your arrival. Please refer to the general residency schedule contained in this document for approximate rehearsal and tour times.

4

When can we purchase air tickets and other reservations?

It is essential and critical that all groups wait until they receive written confirmation and a “go-ahead” from Joyce Howard-Brazel, Chief of Client Services, before making any flight arrangements. This will occur after registrations have been received and the concert is confirmed.

5

How can we request ADA accommodations?

You can request accommodations by contacting midam@midamerica-music.com.

6

What size audience can we expect at our concert?

Audiences are large and enthusiastic. MidAm International has a comprehensive public relations and audience development division that typically sees the vast majority of our international concerts sold out by concert time.

7

How are the concerts promoted and advertised?

Concerts are promoted extensively through local press and social media, along with hundreds of public and private business sources in each location. This coverage, as well as efforts for press coverage in ensembles’ home locations are led by Andrea Niederman, our Director of Public Relations, Publications, and Audience Development and her team.

8

Are there any scholarship opportunities available for groups or individuals that need financial assistance?

Applications are now being accepted for the Peter Tiboris Legacy Scholarship until 9/1/2026. You can apply [here](#).

2027 International Residency Terms & Conditions (page 1/1):

Deposits, Package Credits, and Refunds

If your residency should be cancelled by MidAm International (with exception of cancellations made due to late or non-payment), all monies are completely and immediately refundable. This applies to any individual or group who has made any payments. Group directors must indicate at the time of registration whether they will be participating as a performer, non-performer, or guest conductor. Directors that are guest conductors are not included in a group's tally, as their accommodations are handled separately. Credits only apply to group registrations. Complimentary packages may be used for an individual (director, accompanist, etc.) or may be applied toward the group's balance to reduce each participant's cost. All credits will be applied on the group's final invoice. Deposit/Document schedules are firm and all payments and all required MidAm documents must be received by MidAm International by the deposit/document deadline (NOT postmarked). MidAm International retains the right to cancel groups for non-payment, without refund, if the deposit schedule is not met. Therefore, if any delay in payment or required MidAm document is anticipated, the group director must contact MidAm prior to the payment deadline. Additionally, if a group's deposit is not received by the deposit deadline (and MidAm International does not cancel their registration immediately), an additional \$25 per person late fee will be added to their past-due deposit. An additional \$25 per person late fee will be added for each additional week that passes following the original deposit deadline if the deposit remains unpaid. Should a check payment be returned by bank as unpaid, a \$35 returned check fee will be added to your final invoice. All prices listed are in U.S. Dollars (USD).

Substitutions and Travel Insurance

Your ensemble must be paid in full prior to your arrival to the destination country. Once received, all payments made to MidAm International are non-refundable. This applies to any individual or group who has made any payments. In addition, should an individual cancel participation, all deposits/payments are forfeited and non-transferrable to the remaining group balance. Forfeited deposits may only be used for substitutions on a one-to-one basis. Therefore, cancellation insurance is strongly recommended. MidAm International does not endorse or recommend any travel insurance company who might provide such insurance to the ensemble. Please investigate thoroughly through your preferred insurance carrier prior to your initial deposit.

Airfare

Airfare to and from your international residency destination are the responsibility of the participating ensembles and individuals. If your air arrival is at an alternate airport, you need to arrange transport to the residency city at your own cost. Please consult with your personal travel agent and do your own research on the internet for the best possible price. Also, MidAm International has a travel relationship with Chai Travel Advisors. It is recommended that any groups (10 or more) looking to purchase tickets collectively contact Nanette, their representative, at MAP@chaitravel.com or 973-200-4786, and have her investigate an airfare on your behalf. You are under no obligation to take the airfare she proposes. Please **do not** purchase anything without getting a "go ahead" from MidAm International. **A valid passport is required, and it must remain valid for at least six months beyond the final day of the residency. All travelers (U.S. citizen or non-U.S. citizen) should inquire with the appropriate embassy or consulate regarding entry requirements.**

Participant Responsibility

MidAm International shall not be liable to any individual registrant or group for any injuries, losses, or expenses suffered or incurred by any individual registrant or group arising out of or relating to your purchase of this package. All registrants and groups shall maintain appropriate and adequate general liability insurance coverage and any workmen's compensation insurance required by applicable state law. Group Directors/Leaders shall be responsible for the well-being and safety of the registrants in their ensembles. If not already covered by medical insurance, registrants and their Group Directors are strongly advised to obtain adequate travel medical insurance for all registrants in the ensemble covering the duration of their travel. It is the responsibility of all persons participating as performers to arrive on time and be fully prepared for all rehearsals as well as the performance. All participants in the package must undertake at their own expense to comply with all dress and health requirements of governmental entities as well as the venues where the performance and other events are being held. Should these parameters not be met, MidAm retains the right to disallow those individuals from participating in the rehearsal and/or performance. All performers and non-performers as well as their concert guests give MidAm International permission to take their photo and video within the confines of this package, and to use their performance for marketing purposes indefinitely.

Force Majeure

If the specified venue is unavailable for your performance due to "acts of God" (force majeure), MidAm International reserves the right to move this performance to another concert location within the residency city, or if such move is not practicable for reasons beyond the control of MidAm International then MidAm International shall be relieved from such obligation. Acts of God (force majeure) shall include any unexpected act or circumstance that prevents or impedes MidAm from performing one or more of its contractual obligations if such impediment to MidAm's performance is beyond MidAm's reasonable control and the effects of such impediment cannot reasonably have been avoided or overcome by MidAm. For purposes of this provision, Acts of God shall include, but are not limited to: a) war (whether declared or not), hostilities, act of foreign enemies, b) civil war, riot, rebellion and revolution, act of terrorism, sabotage or piracy; c) currency and trade restriction, embargo, sanction; d) act of authority whether lawful or unlawful, compliance with any law or governmental order, expropriation, seizure of works, requisition, nationalization; e) plague, epidemic (including a recurrence of COVID-19 pandemic), natural disaster or extreme natural event; f) explosion, fire, destruction of equipment, prolonged break-down of transport, telecommunication, information system or energy; g) and general labor disturbance. In the event that "force majeure" causes the cancellation of this tour prior to departure or at any time after arrival in residency destination monies sent to MidAm International are nonrefundable.